

Electric Egg Cooker



USER MANUAL

INSTALLATION INSTRUCTIONS

To avoid the risk of accidents or damage to the appliance .It 's essential to read these instruction before it is installed or used for the first time

Attention!

- Installation and repair of this product must be performed by a qualified person or someone authorized by the manufacturer.
- When installing, or performing maintenance, please follow instructions carefully.
- Please keep this Instruction Manual for future reference.
- The device must be safely grounded before use.
- Check that none of the parts is missing or damaged. If there is any doubt about the product, please do not use and seek expert advice.
- Item requires a dedicated mains power feed.
- Keep packing material out of reach of children to avoid accident.
- This appliance should only operated by a competent, trained person.
- When not using the appliance, or the operator is absent, turn off to avoid any accidental injury or damage.
- If there need for repair, please seek expert advice and use only original manufacturer spare parts. It is dangerous to not follow the above requirements.
- This appliance is for commercial use only.
- Do not rinse the equipment with water directly.
- Clean the surface of stainless steel periodically with appropriate method to prevent any damage brought by oxidization or any other chemical interference.

1.Overview

- ◆ The egg cooker is a perfect kitchen appliance for commercial use.
- ◆ The body is made of high quality stainless steel, luxurious and stylish and it has been fitted with electrical elements that have been designed to be energy- saving and safe.

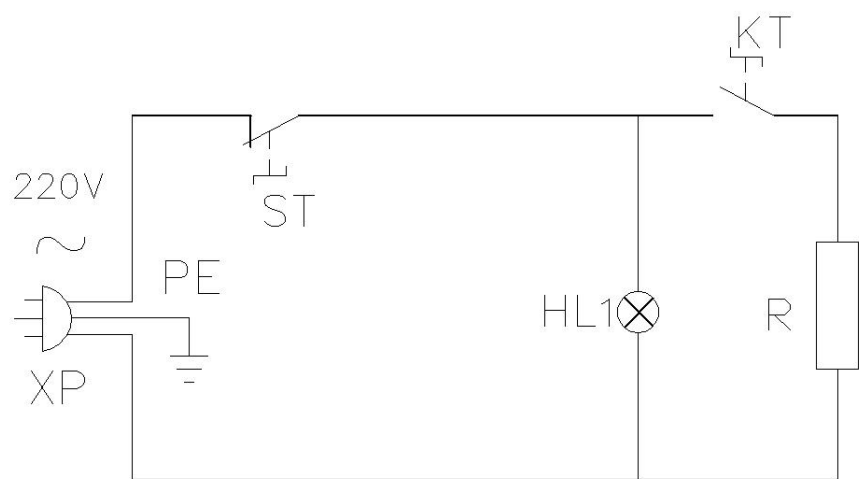
2.Main Technical Parameters

Model	Voltage	Power(W)	Capacity	Size(mm)	Temperature Range
EC-8	220v~240v/50hz	2600W	8Eggs	375*220*290	30~110°C

3.Operation

1. Check if the power supply is properly fixed and make sure that the supplied voltage conforms to requirement.
2. If plug in, current is flowing to the machine. Revolve the temperature controller clockwise till pointing to the needed temperature. It'll show if the heating element stops working. Water temperature in tank will rise when the orange indicator is on.
3. Use of the egg on the plate in the water, then cooking the best.
4. The cover of tank is designed for keeping unit warm and clean.
5. Please revolve the temperature controller anticlockwise to the limited position and then cut off power supply for safety.
- 6 .Only pour the water out of tank when water temperature cools to room temperature.
7. For safe and enduring use, users should often clear tank and dirt on heating element.
- 8.Temperature regulation:The operation panel has temperature controller which control one heating element respectively.
9. Adjustable temperature of the controller ranges 30~110° C.
- 10.The heating element will automatically stop working when water temperature reaches the setting value, if the temperature drops, it will automatically restart.
11. When element is working, heating indicator light is on (orange).
12. To Stop: Turn temperature control knob to the "0" position, heating element will then stop working.

4.Circuit Diagram



XP:Powe Cord

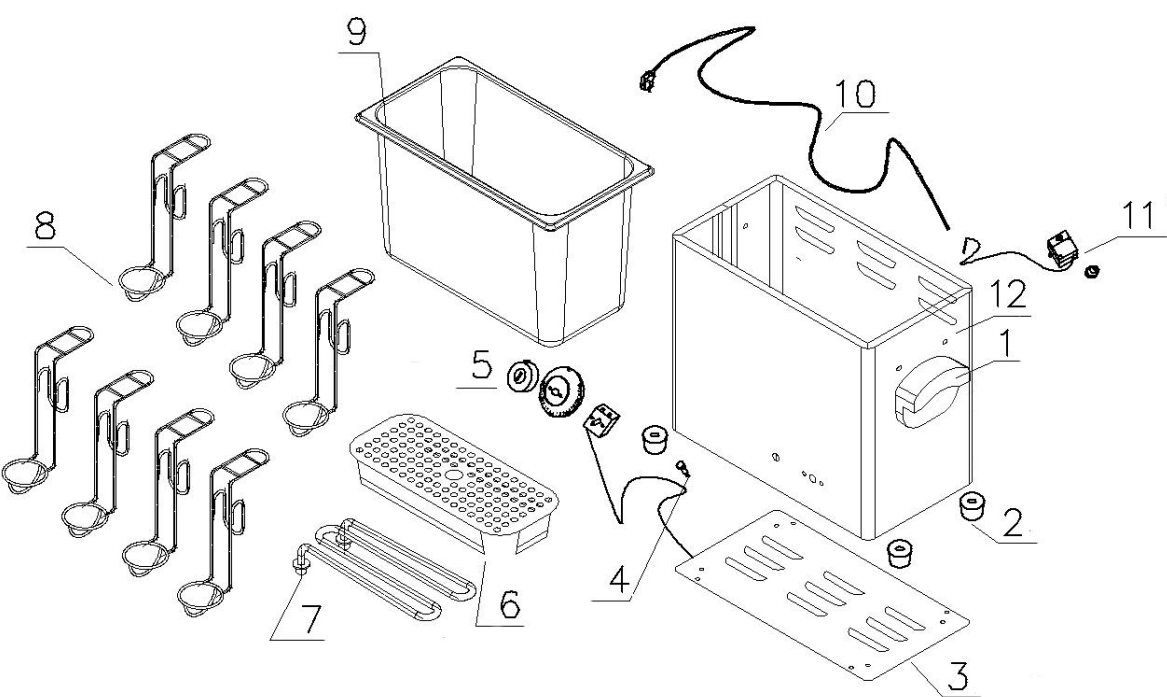
ST:Temperature Limiter

HL1:Working Indicator Light

KT:Temperature Controller

R:Heating Element

5.Structure diagram for reference



1	Housing Handle	7	Element
2	Rubber Feet	8	Egg Holder
3	Bottom Sheet	9	Water Tank
4	Indicator Light	10	Power Cord
5	Thermostat with knob	11	Temperature Limiter
6	Element Cover	12	Housing Body

6.Maintenance and service

- The maintenance staff shall have an electrician qualification.Don't Conduct maintenance with power- on.
- Transportation and storage: during transportation, the machine shall be carefully protected and away from shaking. The packaged machine shall not be stored in the open air. It should be stored in a ventilated warehouse without corrosive gas. Prohibit putting upside down.

Failures	Cause	Solutions
1. Working indicator is not on and unit not heating.	1.No Power to machine.	1. Check power supply
2.Heating indicator is on but the temperature dose not rise.	1.Connection of the heating element is loose 2.Heating element damaged 3. Temperature controller damaged	1.Fasten the two terminals between the heating element and the screw 2.replace the heating element 3.Replace the temperature controller